

# eMotive

Peter Murdoch 2009



Abrupt and a little bit forward

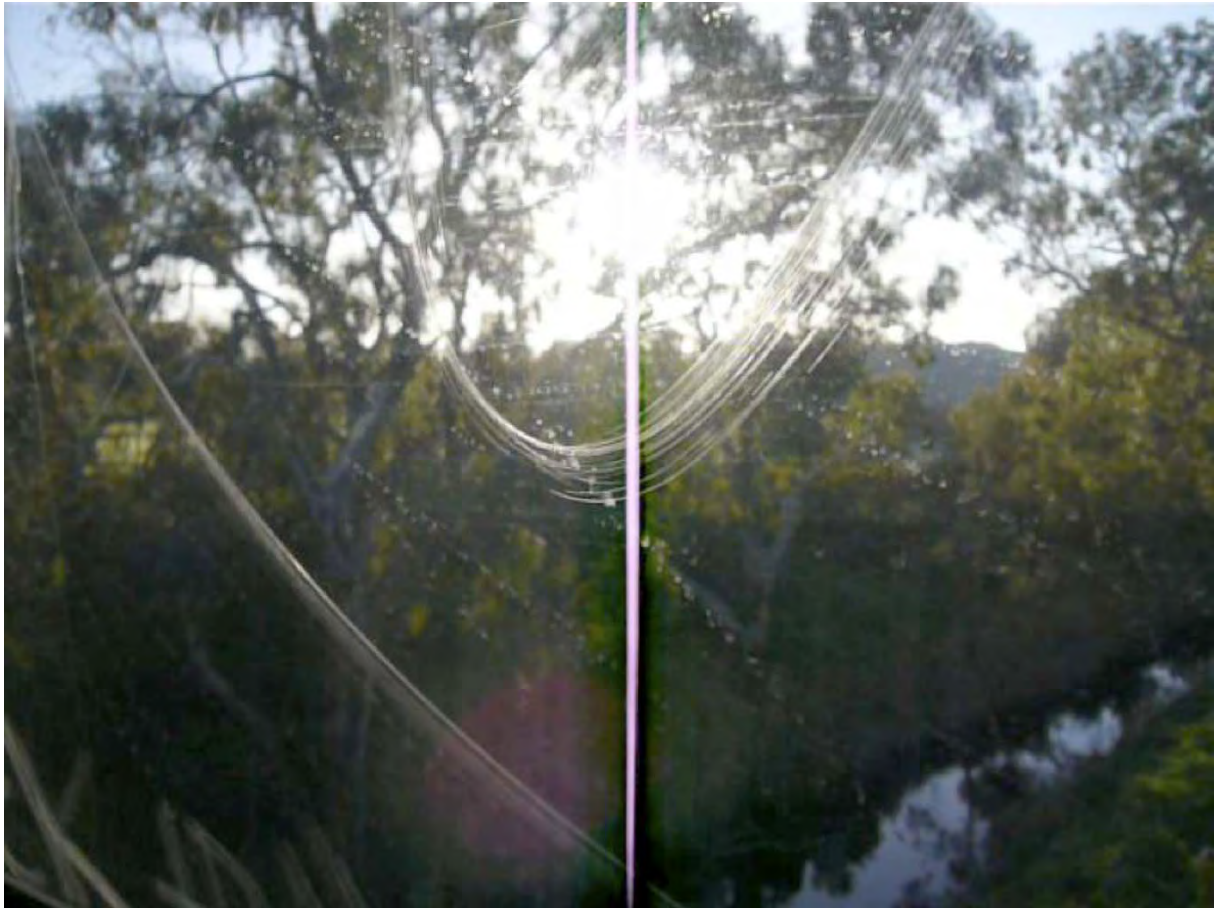


A light harvest





A light splash



aSymmetry of nature



At day's end



A touch of the Sun





Beyond the focal plain

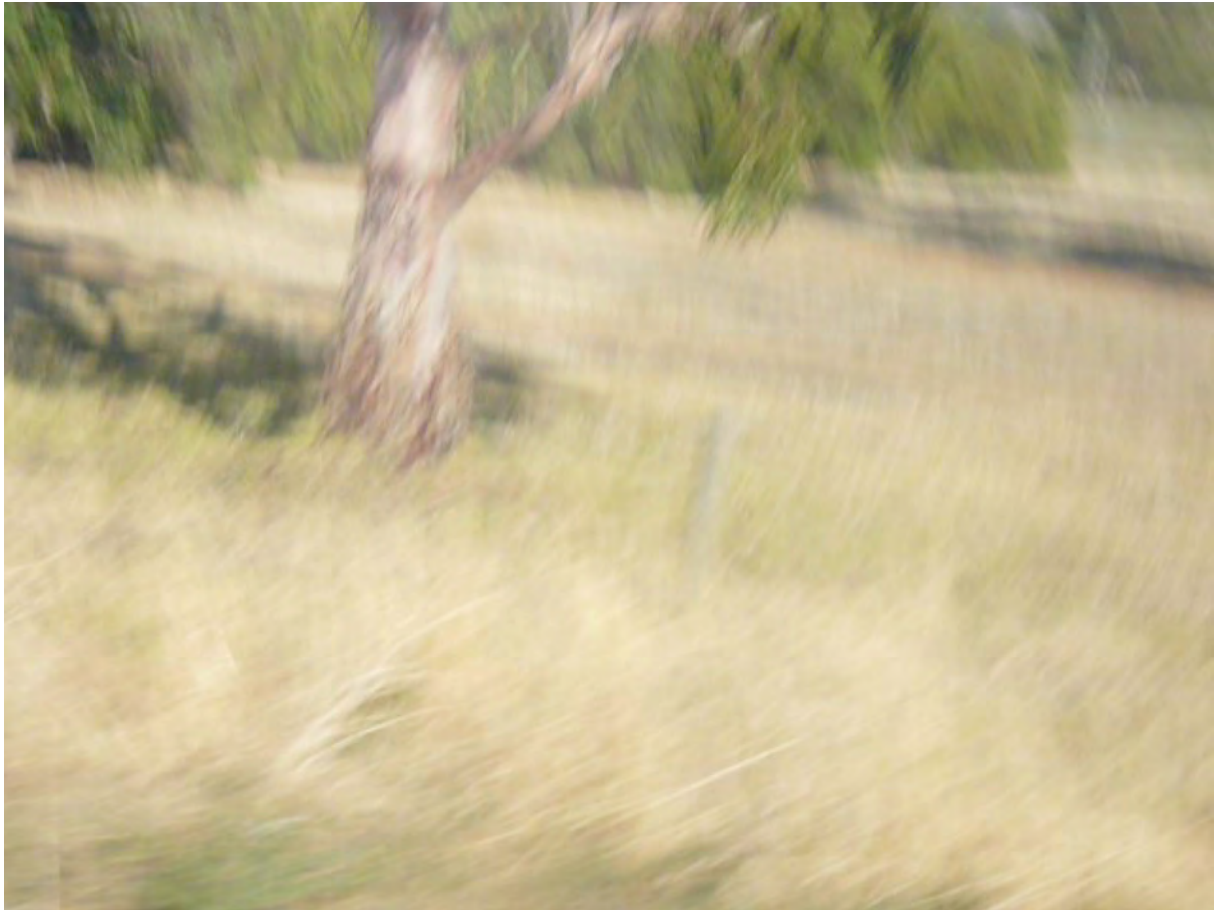




deMarkation



Departing



Dizzy Sun day afternoon





Dreams of Monet's waterlilies



Evening fanfare



Finding middle ground





God's own acre



Go fish



Guarding our senses





Helter shelter



The illusion of emptiness



In plain view

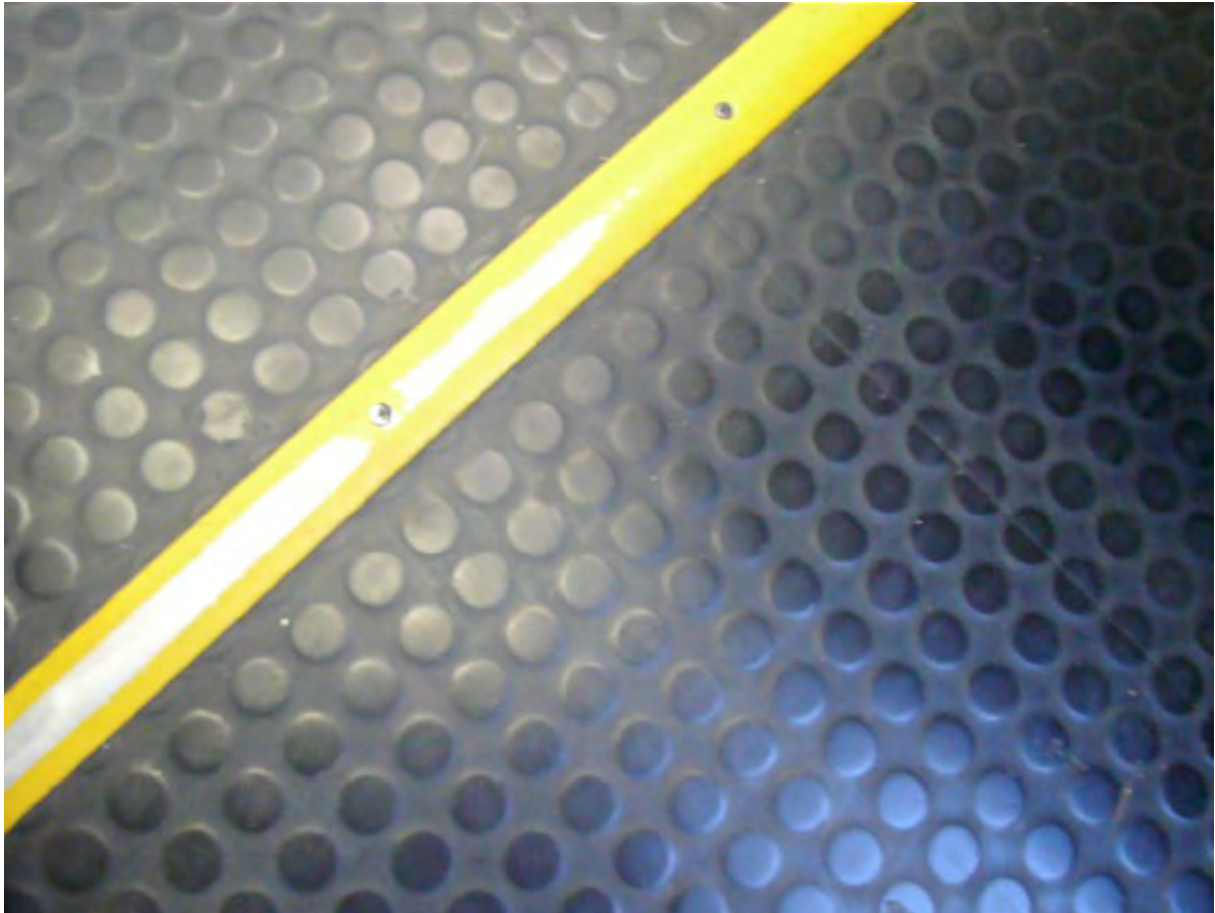




Light rail



Limited field of view



Non-slip and strip



Of lines on a plain





One's clouded view



On the edge of obscurity



On the verge of comprehension



Out in the noon day Sun





The pyramids of Geeza



Railcar blue



The rain on the plain falls mainly on the train



Scratching the surface





Self portrait



Shades of Odilon Redon



A Streets car named desire



The lady in red

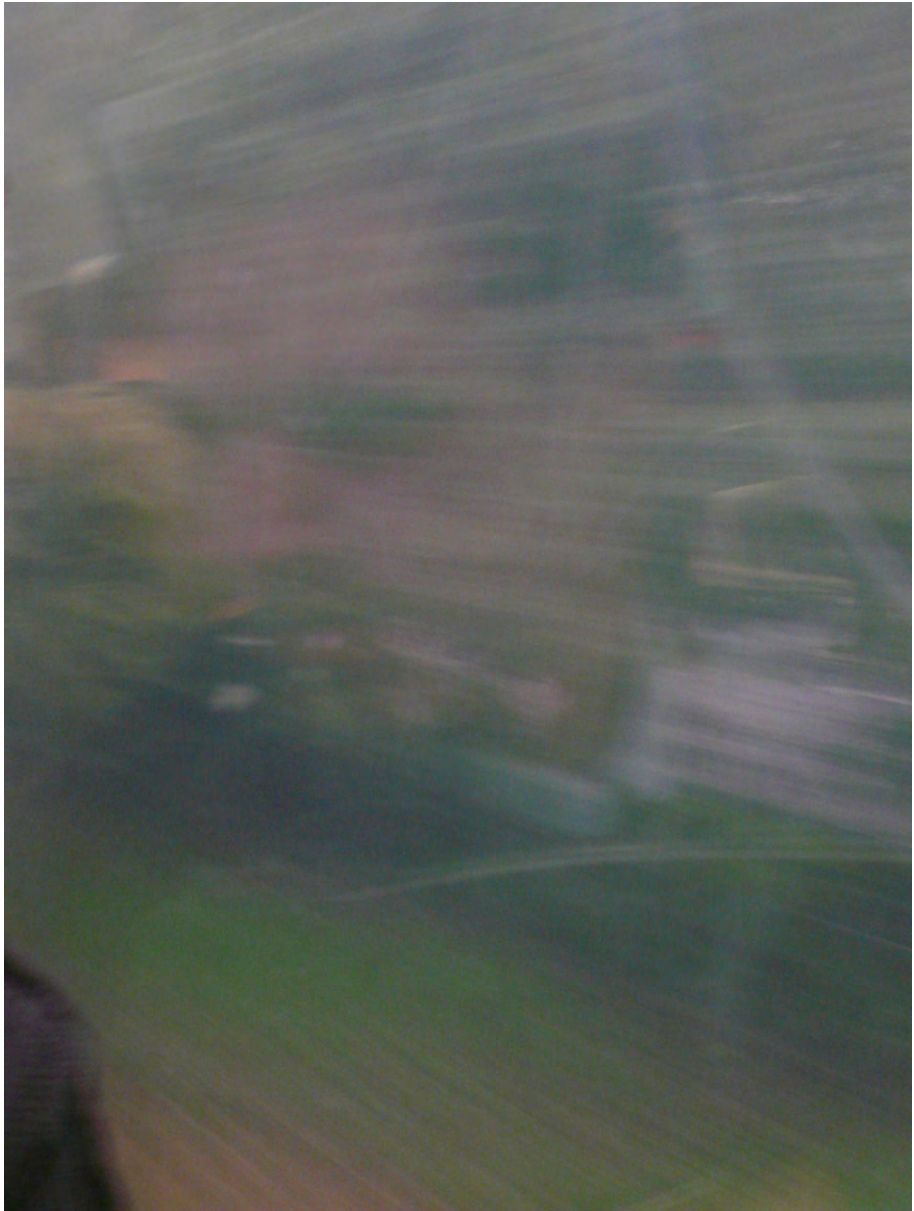




The sunset clause



Waiting for God, Oh!



Flashback





Double gazing





Pylon



Reflection



The ascent of man

eMotive

© Peter Murdoch 2009  
Published 2011

[info@pgmurdoch.com.au](mailto:info@pgmurdoch.com.au)

All photographs, Peter Murdoch.